

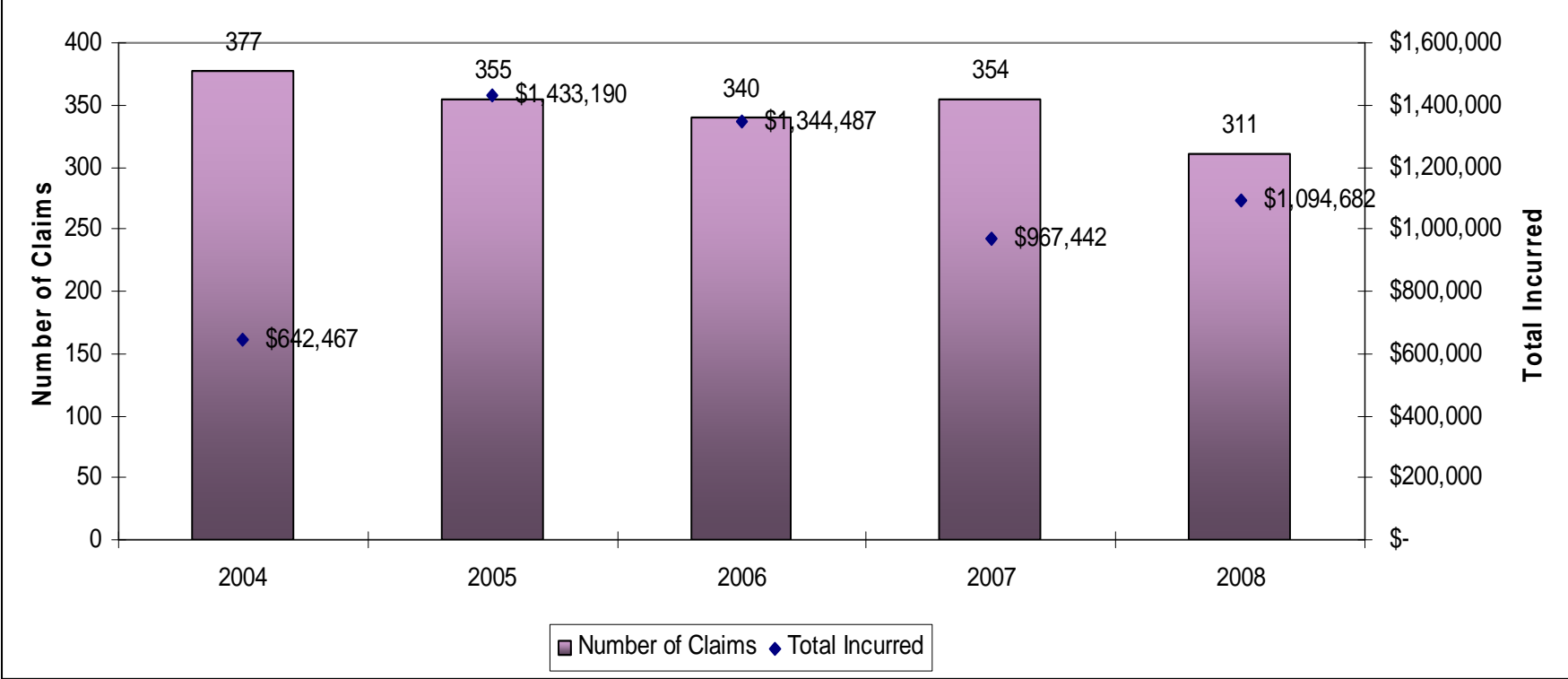
# **Districts Mutual Insurance**

## Workers Compensation Analysis

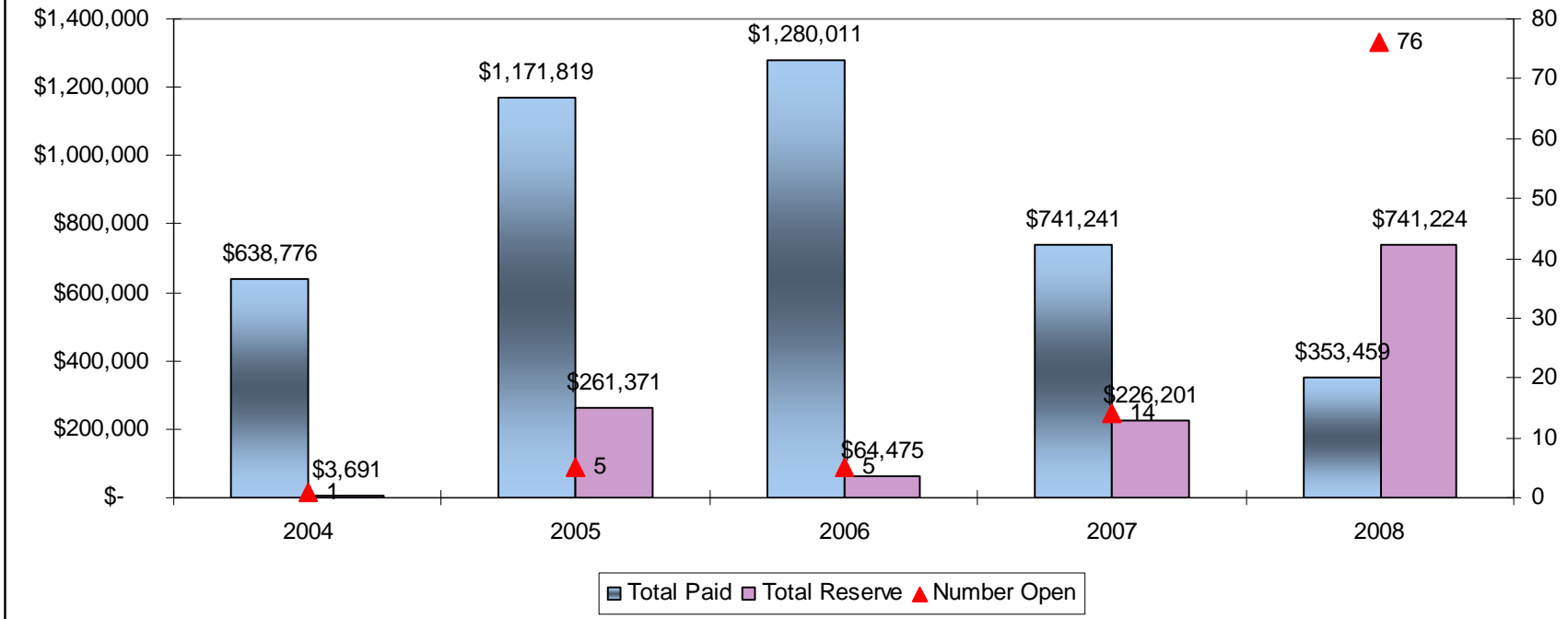
United Heartland Inc  
July 2009-data valued as of June 30, 2009



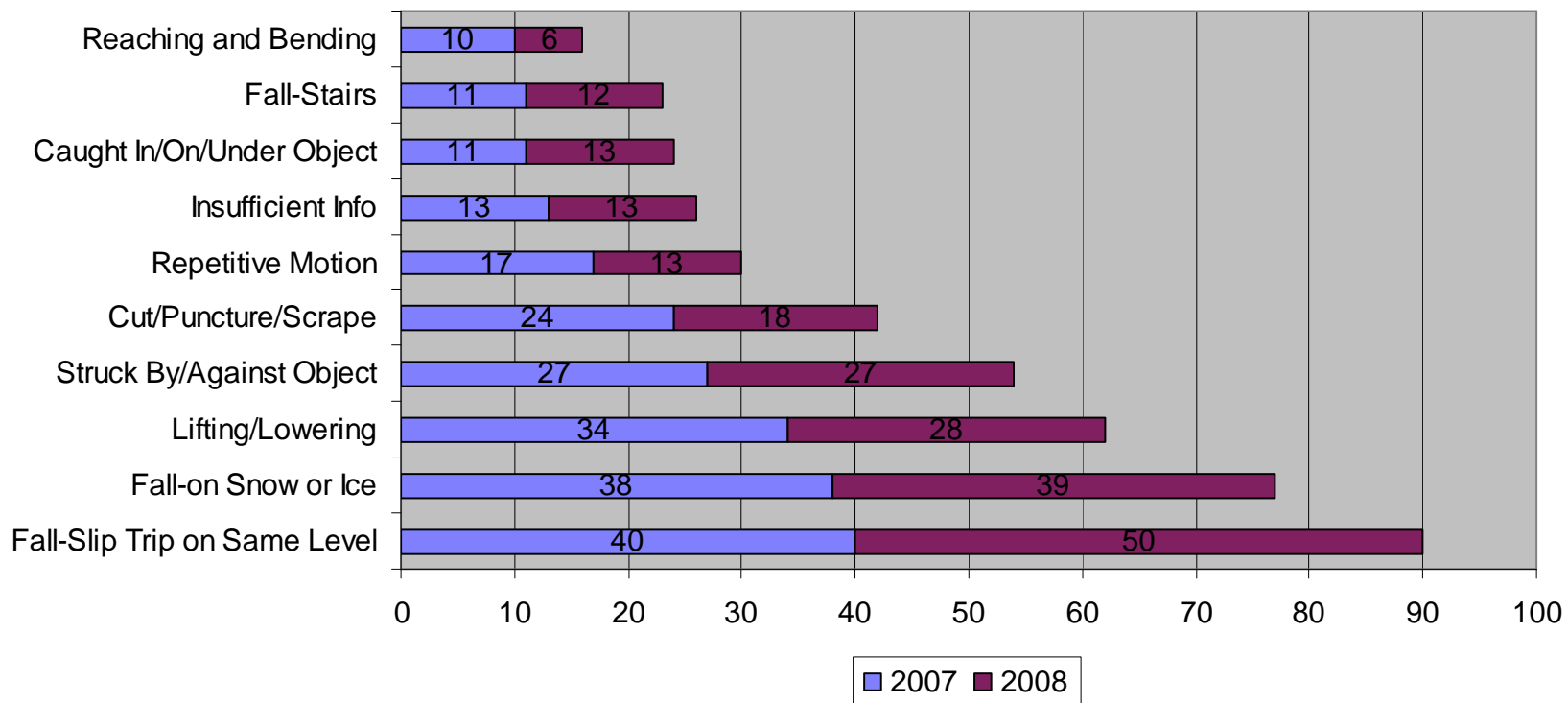
### Districts Mutual Insurance Frequency and Severity by Policy Year



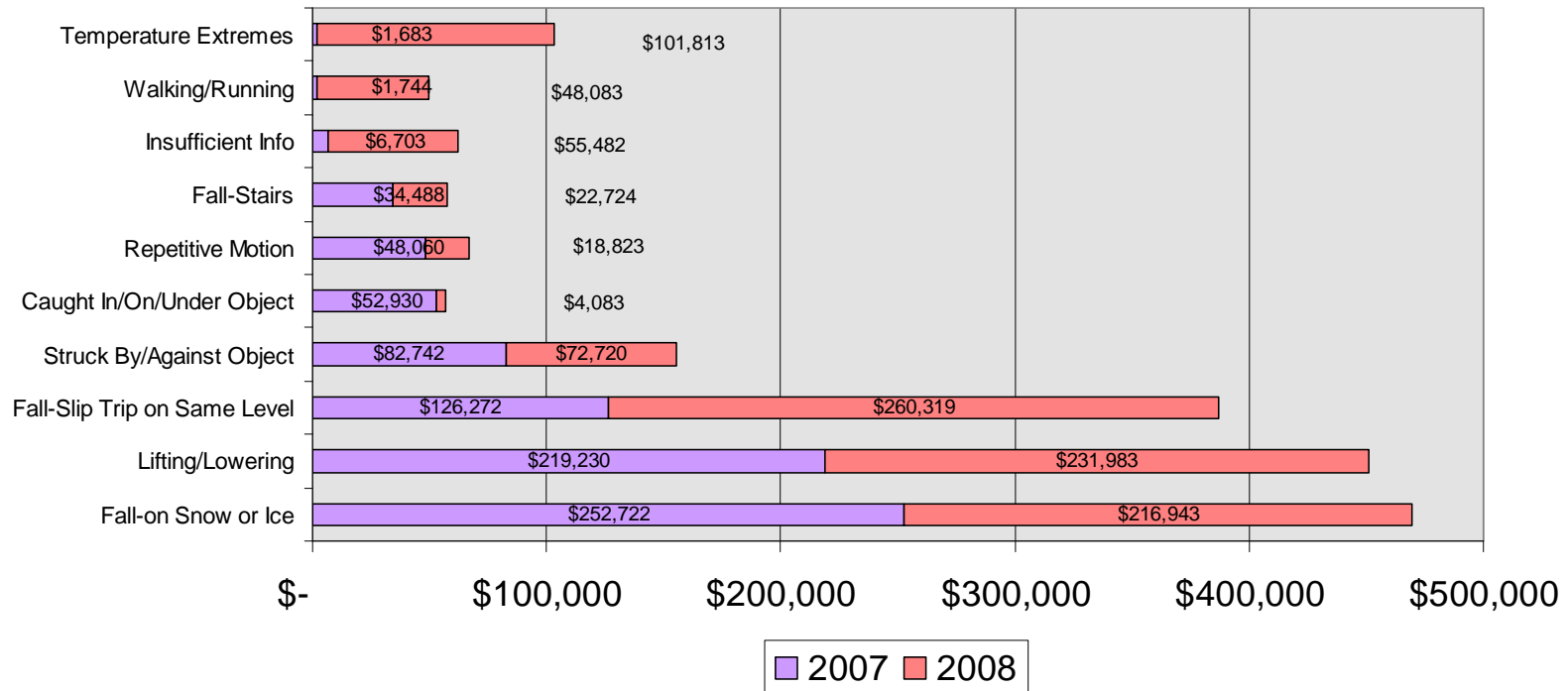
### Districts Mutual Insurance Sum Paid, Reserves, and Open Claims



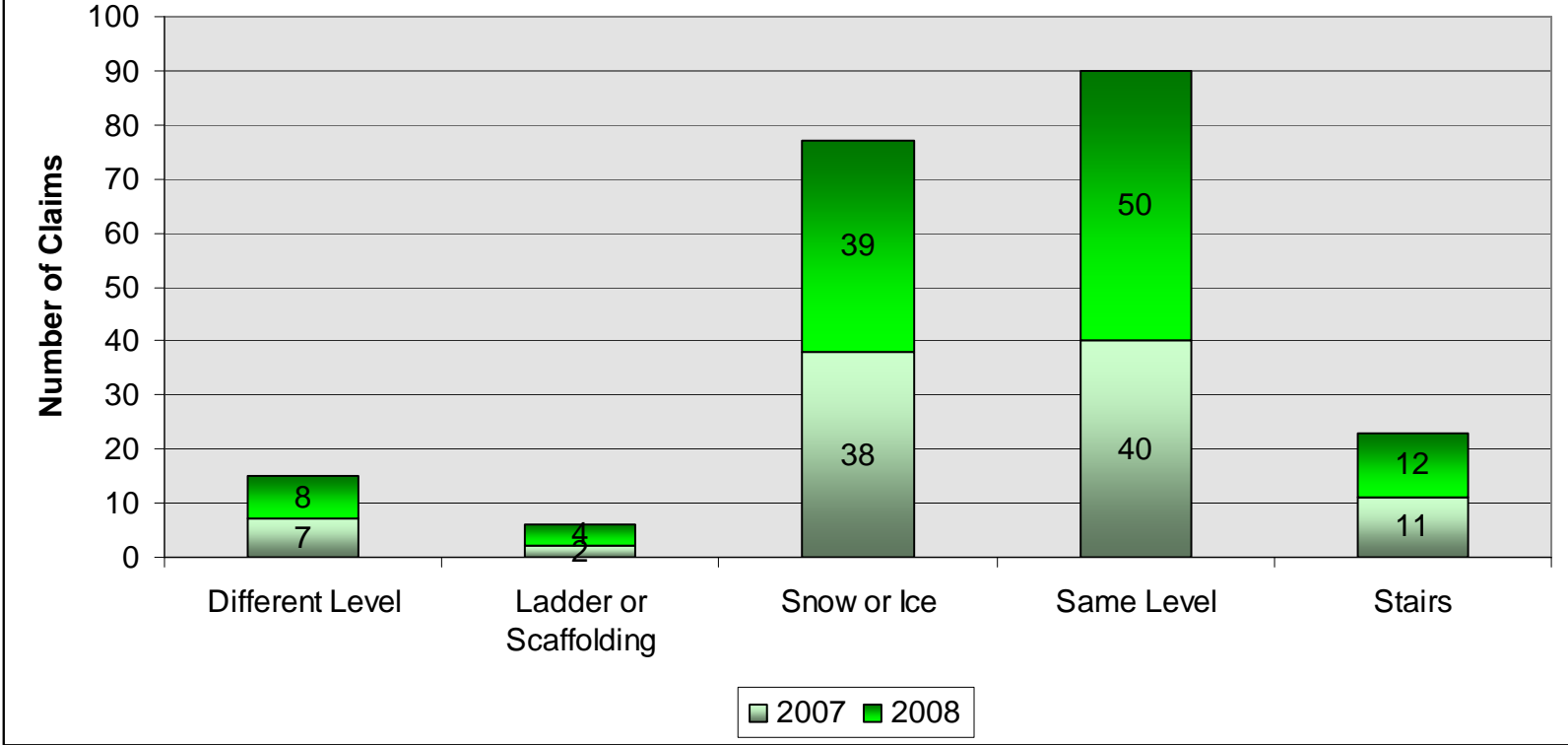
## Districts Mutual Insurance Top 10 Accident Sources 2007 and 2008 Combined



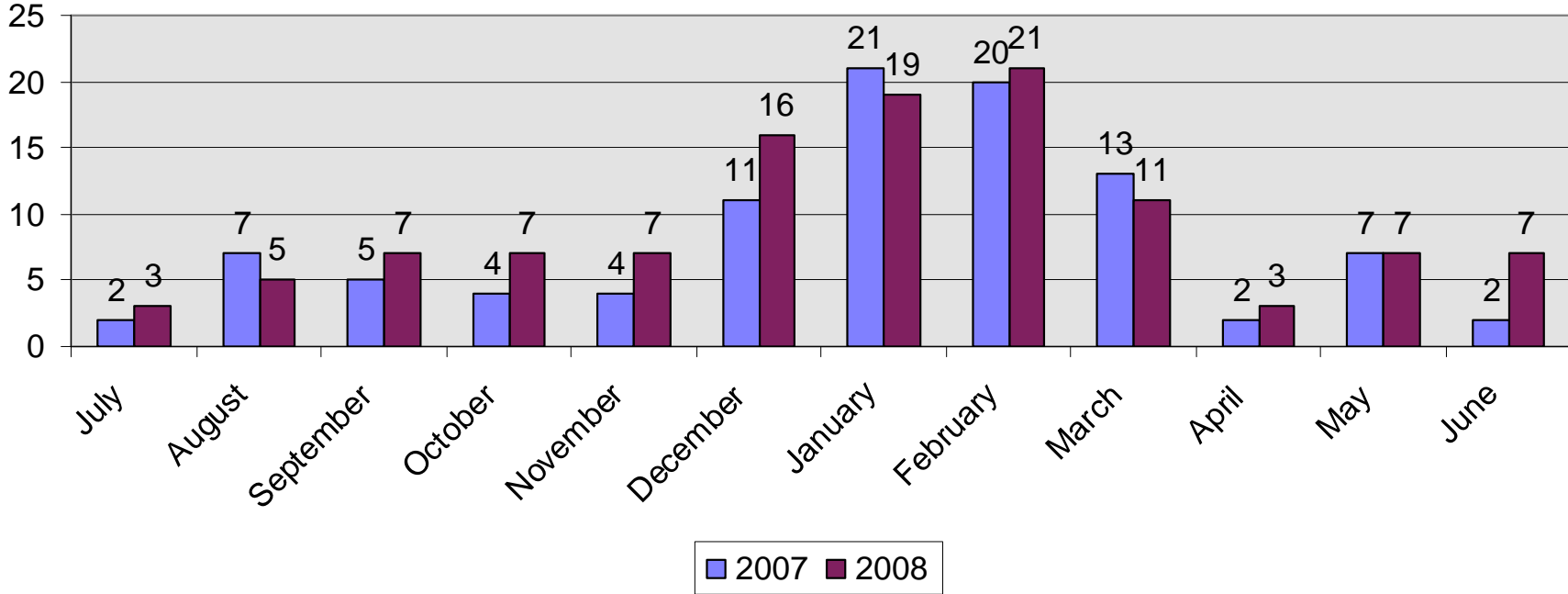
## Districts Mutual Insurance Accident Source Top 10 Severity 2007 and 2008



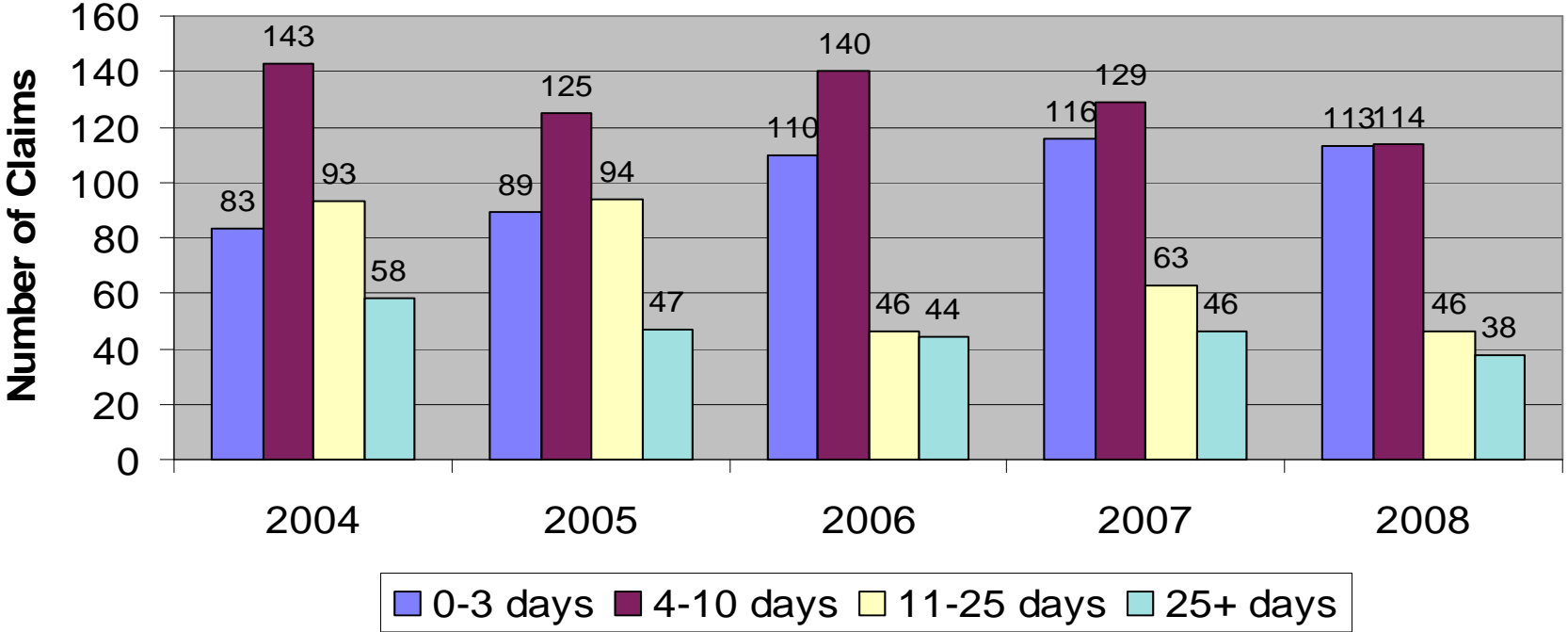
### Districts Mutual Insurance Fall Summary 2007 and 2008



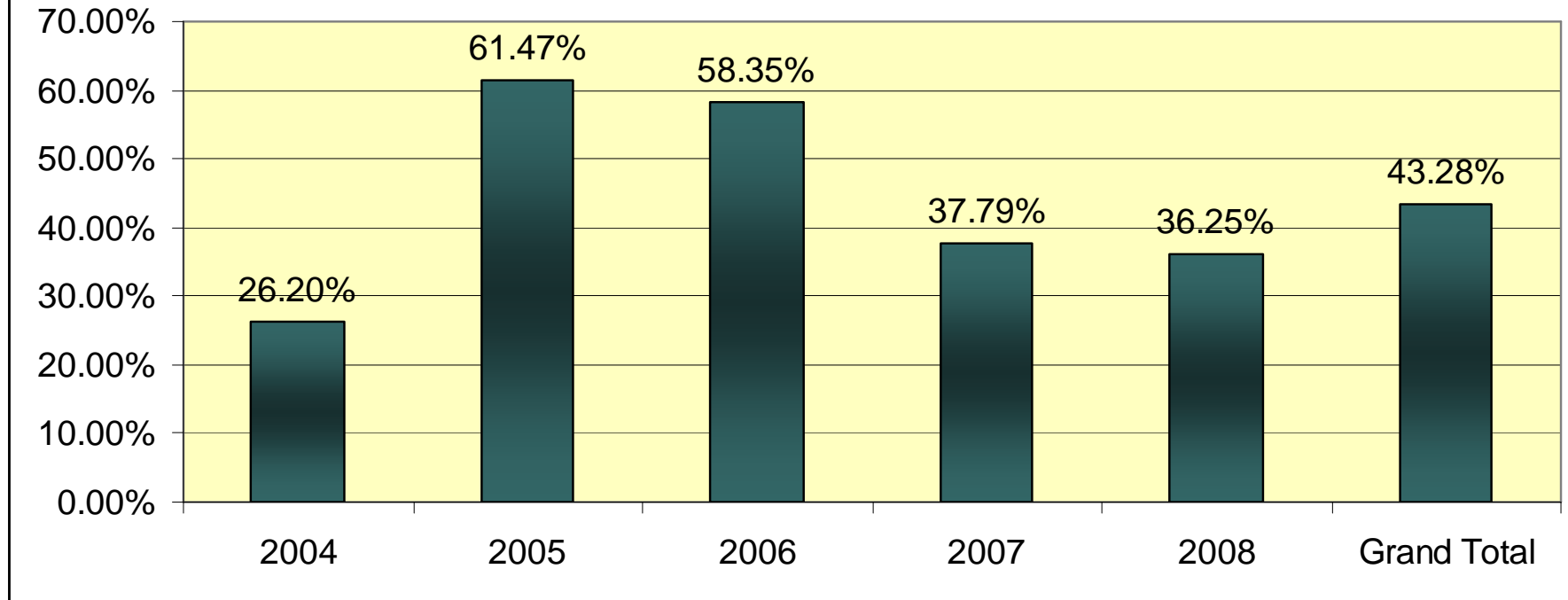
# Districts Mutual Insurance Number of Falls by Month 2007 and 2008



# Districts Mutual Insurance Lag Time Report



## Districts Mutual Insurance Loss Ratio by Year



## **DISTRICTS MUTUAL INSURANCE**

### **DIRTY DOZEN (LARGEST CLAIM DOLLARS 2004 THROUGH 2008)**

| DATE OF INJURY | DISTRICT             | INJURY SOURCE       | TOTAL INCURRED | OPEN OR CLOSED | REMAINING RESERVE |
|----------------|----------------------|---------------------|----------------|----------------|-------------------|
| 4-7-06         | Gateway              | Slip/Trip/Fall      | \$515,529.61   | Open           | \$94,121.30       |
| 12-6-06        | Gateway              | Material Handling   | \$306,467.32   | Open           | \$8,477.50        |
| 4-1-06         | Milwaukee Area       | Slip/Trip/Fall      | \$151,785.37   | Open           | \$64,700.60       |
| 10-10-06       | Wisconsin Indianhead | Material Handling   | \$149,339.97   | Closed         | None              |
| 5-9-07         | Chippewa Valley      | Slip/Trip/Fall      | \$144,795.34   | Open           | \$22,087.20       |
| 12-11-08       | Southwest Wisconsin  | Material Handling   | \$132,690.00   | Open           | \$127,352.90      |
| 8-13-07        | Gateway              | Material Handling   | \$114,355.38   | Open           | \$88,517.90       |
| 12-6-06        | Milwaukee Area       | Slip/Trip/Fall      | \$107,637.71   | Closed         | None              |
| 10-6-08        | Moraine Park         | Temperature Extreme | \$98,800.00    | Open           | \$74,509.70       |
| 1-5-09         | Fox Valley           | Slip/Trip/Fall      | \$93,769.50    | Open           | \$61,632.60       |
| 12-3-07        | Chippewa Valley      | Slip/Trip/Fall      | \$83,736.63    | Open           | \$14,547.40       |
| 2-17-09        | Milwaukee Area       | Slip/Trip/Fall      | \$83,150.00    | Open           | \$83,150.00       |

